

Technical sheet 81F(w)

Technical characteristics



Body type	U-FLANGED / Replaceable seat rubber
Characteristics	Concentric and bidirectional
Production range	DN 80-1600
Design standard	EN 593
Face to Face	EN 558-1 Series 20 ISO 5752 Series 20 DIN 3202 T3 K1 API 609 Category A BS 5155 series 4-5 except DN350
Top flange	ISO 5211
Assembly flanges	PN 10/PN 16/ANSI class 150
Marking	EN 19
Maximum working pressure	16 bar DN 080-150 10 bar DN 200-1600 (16 bar optionally) 25 bar DN 080-0300 special series
Temperature range	-40°C a 210°C depends of material
Hydraulic tests	EN 12266 / ISO 5208 Rate A
Remarks	Pressure equipment directive
Options	ATEX (II 2GD) 2014/34/EU Vulcanized seat

General description

The 81F(w) double flanged type valve is a one-piece body design with flanges to suit all standards (DIN,ANSI, BS, etc.). It also provides dead-end services with downstream piping removed. Its robust design makes it suitable for many applications. It is used in water treatment plants, pump stations, filtration systems, shipbuilding industry and more.

Applications

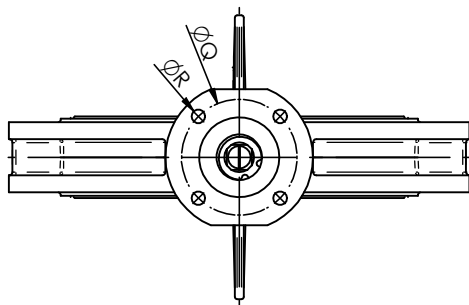
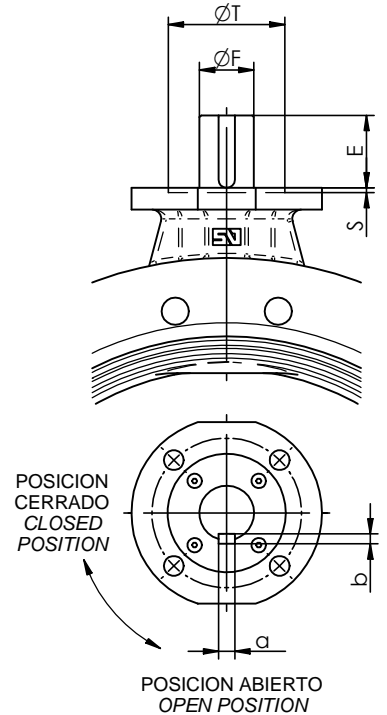
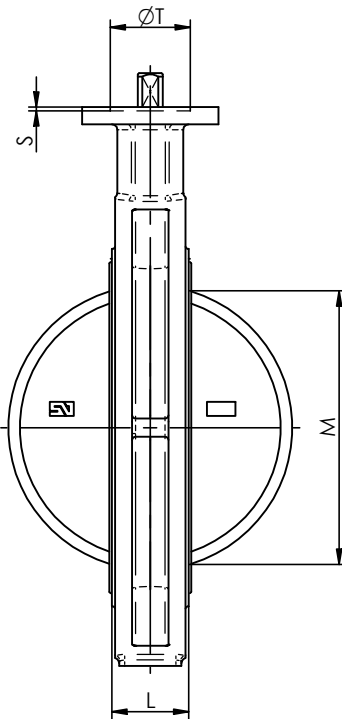
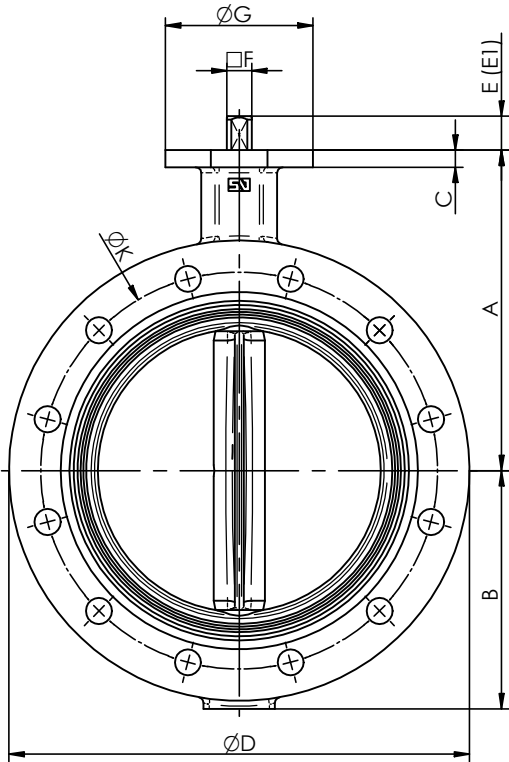
- Filtration systems
- Water treatment
- Pipelines water distribution
- Cooling systems
- Naval industry



Technical sheets and dimensional drawings

81F(w)-001-DT	General dimensions
81F(w)-002-DT	Dimensions manual actuator
81F(w)-003-DT	Dimensions pneumatic actuator
81F(w)-004-DT	Dimensions electrical actuator Bernard
81F(w)-005-DT	Dimensions electrical actuator AUMA
81F(w)-006-DT	Assembling flanges
81F(w)-007-DT	Assembling screws
81F(w)-0010-DT	Materials detail DN 080-200
81F(w)-0011-DT	Materials detail DN 250-500
81F(w)-0012-DT	Materials detail DN 600-1100
81F(w)-0013-DT	Materials detail DN 1200-1600

BUTTERFLY VALVE "81F(W)" GENERAL DIMENSIONS



DN 80/500

DN 600/1600

E1 - EJE CORTO OPCIONAL BAJO PEDIDO
E1 - SHORT SHAFT ON REQUEST

DIMENSIONES GENERALES / GENERAL DIMENSIONS

BRIDA / TOP FLANGE

DN	A	B	C	D	E	E1	F	G	K			L	M	Kg	ISO	Q	R	S	T	a x b	
									PN10	PN16	Cl.150										
80	3"	141	110	10	200	30	16	11	90	160	160	152.4	46	65	5.3	F-07	70	4x9			
100	4"	165	115	10	230	30	16	11	90	180	180	190.5	52	90	7.0	F-07	70	4x9			
125	5"	180	127	12	255	33	18	14	90	210	210	215.9	56	112	9.5	F-07	70	4x9			
150	6"	193	143	12	285	33	18	14	90	240	240	241.3	56	139	11.0	F-07	70	4x9			
200	8"	225	173	12	345	33	18	17	90	295	295	298.5	60	191	18.4	F-07	70	4x9			
250	10"	283	210	14	406	30	23	22	130	350	355	361.9	68	241	30.8	F-10	102	4x12	3	70	
300	12"	308	240	14	480	30	23	22	130	400	410	431.8	78	290	45.3	F-10	102	4x12	3	70	
350	14"	339	271	14	535	31		22	160	460	470	476.2	78	338	55.0	F-10	102	4x12	3	70	
400	16"	380	308	18	597	31		27	160	515	525	539.7	102	387	80.0	F-12	125	4x14	4	85	
450	18"	381	340	20	640	38		36	190	565	585	577.8	114	434	99.9	F-14	140	4x18	4	100	
500	20"	433	380	22	700	38		36	210	620	650	635.0	127	478	137	F-14	140	4x18	4	100	
600	24"	494	440	24	834	80		60	210	725	770	749.3	154	570	220	F-16	165	4x22	5	130	18x11
700	28"	560	485	25	927	106		65	300	840	840	863.5	165	660	282	F-25	254	8x18	5	200	18x11
750	30"	590	530	25	995	106		80	300	900	900	914.4	190	705	350	F-25	254	8x18	5	200	22x14
800	32"	630	565	29	1060	106		80	300	950	950	978	190	763	398	F-25	254	8x18	5	200	22x14
900	36"	695	610	32	1170	110		80	350	1050	1050	1086	203	866	511	F-25	254	8x18	5	200	22x14
1000	40"	770	675	32	1290	110		80	350	1160	1170	1200	216	966	686	F-25	254	8x18	5	200	22x14
1050	42"	770	675	32	1346	110		80	350			1257.3	216	1010	776	F-25	254	8x18	5	200	22x14
1100	44"	815	733	32	1405	110		80	350	1270	1270	1314.5	216	1054	865	F-25	254	8x18	5	200	22x14
1200	48"	875	818	40	1485	110		100	350	1380	1390	1422	254	1153	1072	F-30	298	8x23	5	230	28x16
1400	56"	1000	969	35	1735	120		120	415	1590	1590	1651	280	1342	1584	F-30	298	8x23	5	230	28x16
1500	60"	1075	1050	40	1855	160		130	475	1700	1710	1759	318	1447	2110	F-40	406	8x39	8	300	32x18
1600	64"	1115	1090	40	1930	160		130	475	1820	1820		318	1533	2153	F-40	406	8x39	8	300	32x18