

SAFETY SPRAY SHIELDS

FlangeGuards SUREBAND

SUREBAND[®]Clear



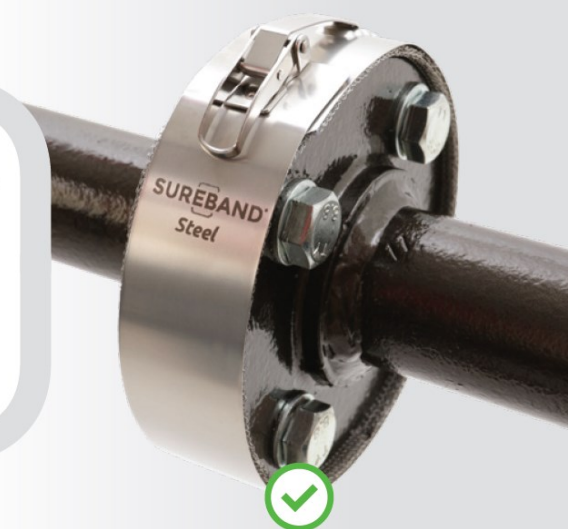
ALL-PTFE. OUTLASTS CONVENTIONAL PTFE-COATED FIBREGLASS SHIELDS IN CORROSIVE ENVIRONMENTS

NO PULL-CORDS.
FITTED AND REMOVED
IN SECONDS



MULTI-LAYERED
INTERNAL MESH
DIFFUSES PRESSURE
RELEASE

SUREBAND[®]Steel



ALL-316 ST/ST BANDING AND MESH.
SUITABLE FOR HIGH PRESSURE AND
TEMPERATURE APPLICATIONS

SUREBAND SAFETY SPRAY SHIELDS

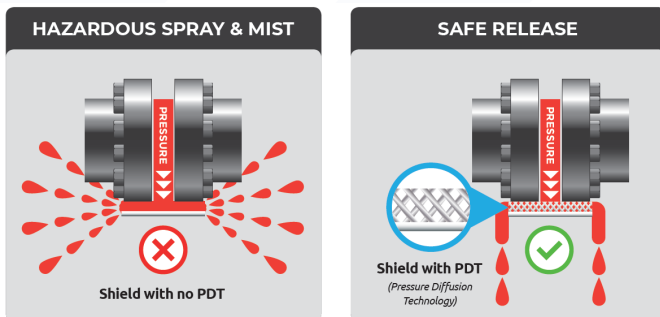
Applications

- » Spray shields are used to convert dangerous leaks and sprays into safe, manageable releases.
- » Spray shields are safety devices that provide added levels of protection for plant personnel and assets.
- » Spray shields can be used to provide protection on gasketed flanged joints, screwed connections, valve bonnets, filters, expansion joints, and any other components that could pose a leakage risk.

- » No tie cords or additional tools are required to install the shields.
- » Litmus paper patches are incorporated into the shields to provide a visual indication of joint leakage in chemical applications.
- » For smaller flanges sizes, universally sized shields can be fitted to a number of different flange sizes or pressure classes.

Materials

- » SUREBAND Clear PTFE – used with aggressive chemical media.
- » SUREBAND Steel – SS 316 stainless steel used with higher temperature and pressure processes.
- » Pressure Diffusion Technology (PDT) multi-layered mesh is used with both shield varieties to diffuse pressure from sprays or leaks, and prevents mist formation.



Dimensions

- » To fit ASME B16.5 flanges; 1/2" thru 24" Classes 150, 300 and 600
- » Larger or custom sizes available on request.

Properties

- » The open ended shield design ensures that no leaking product remains trapped within the shield itself.
- » The mechanical latch or hook & loop attachment method provides a quick means to install and remove the shields.



SUREBAND Clear

SUREBAND Steel