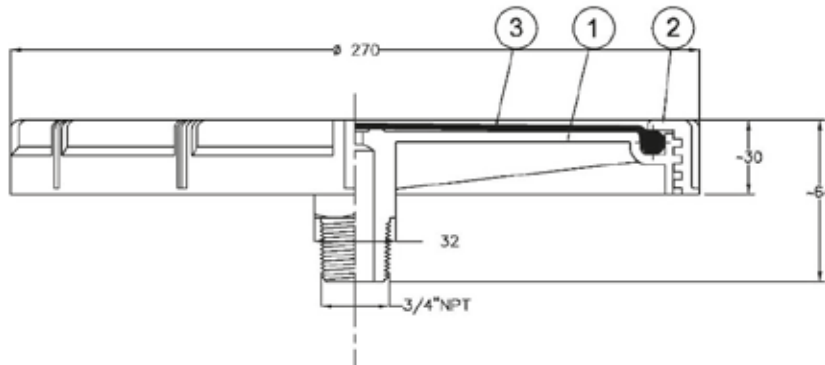
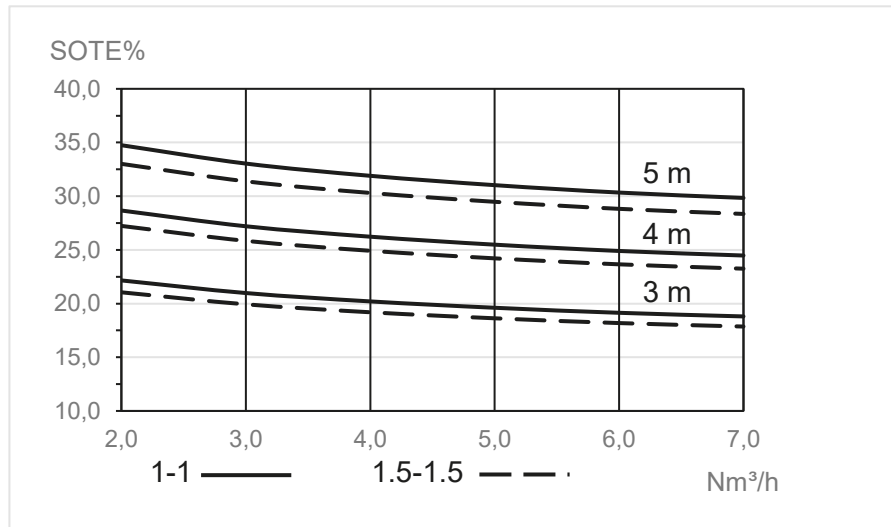


Discs & Tubes Diffuser



BA 9" Disc diffuser, fine bubble diffuser EPDM membrane



Pos.	Description	Material	Q.ty
1	Base	PPFG 30%	1
2	Retainer ring	PPFG 30%	1
3	Membrane	EPDM	1

Dimensions

Outer Diameter [mm]	Connection	Overall Height [mm]	Ret. Ring Height [mm]
270	3/4" NPT	64	30

Material

Diffuser code	Membrane	Membrane perforation	Number of perforations	Active surface [m²]	Holder	Retainer ring
485248550	EPDM	1.0 - 1.0	> 6.500	0.0381	PPFG 30%	PPFG 30%
485248549	EPDM	1.5 - 1.5	> 4.000	0.0381	PPFG 30%	PPFG 30%

Performance

Diffuser code	Design range Airflow [Nm ³ /h]	Nominal airflow [Nm ³ /h]	Maximum airflow [Nm ³ /h]	Minimum airflow [Nm ³ /h]	Head loss ¹ [cm wc]
4852485550	2.0 - 4.0	3.5	7.0	1.0	35.0
4852485549	4.0 - 7.0	5.5	11.0	2.0	28.0

1. At nominal airflow and 4 m submergence

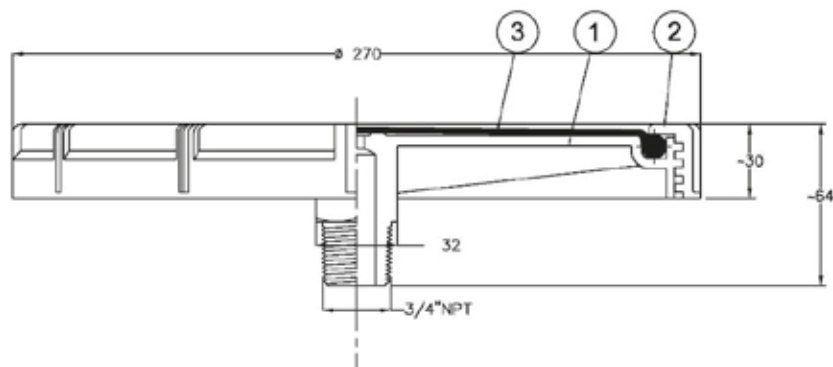
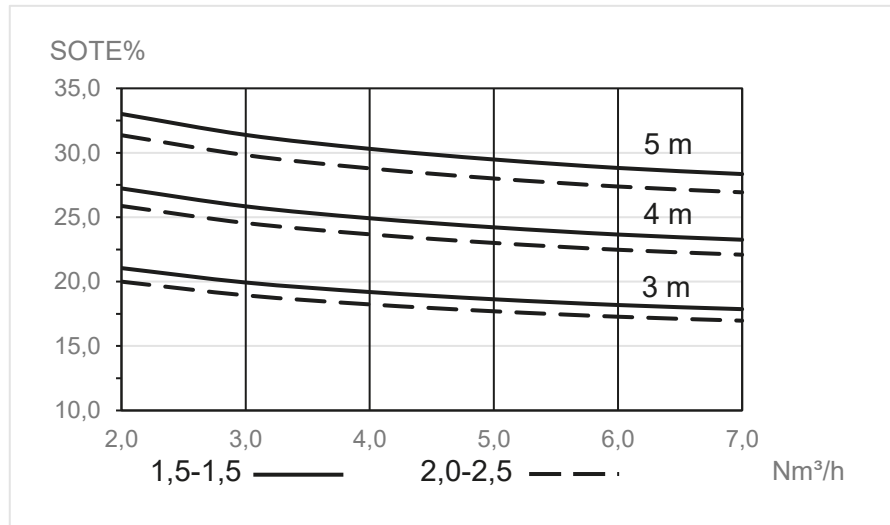
Membrane

Diffuser code	Average thickness [mm]	Shear strength [kg/cm ²]	Elongation [%]	Tear strength [N/mm]	Hardness	Plasticiser content in compound [%]
4852485550	2.2	> 140	600	> 5.0	60 Shore A	< 10
4852485549	2.2	> 140	600	> 5.0	60 Shore A	< 10

Note:

SOTE according to EN 12255-15
 Tolerance on thickness: ±0,2 mm
 Shear strength according to ISO 37 type 1
 Elongation according to ISO 37 type 1
 Tear strength according to ISO 34-1A

BA 9" Disc diffuser, fine bubble diffuser silicone membrane



Pos.	Description	Material	Q.ty
1	Base	PPFG 30%	1
2	Retainer ring	PPFG 30%	1
3	Membrane	Silicone	1

Dimensions

Outer Diameter [mm]	Connection	Overall Height [mm]	Ret. Ring Height [mm]
270	3/4" NPT	64	30

Material

Diffuser code	Membrane	Membrane perforation	Number of perforations	Active surface [m²]	Holder	Retainer ring
04072	Silicone	1,5 - 1,5	> 4.000	0,0381	PPFG 30%	PPFG 30%
04073	Silicone	2,0 - 2,5	> 2.200	0,0381	PPFG 30%	PPFG 30%

Performance

Diffuser code	Design range Airflow [Nm ³ /h]	Nominal airflow [Nm ³ /h]	Maximum airflow [Nm ³ /h]	Minimum airflow [Nm ³ /h]	Head loss ¹ [cm wc]
04072	4.5 - 6.5	5.5	11.0	2.0	20.
04073	4.5 - 6.5	5.5	11.0	2.0	28

1. At nominal airflow and 4 m submergence

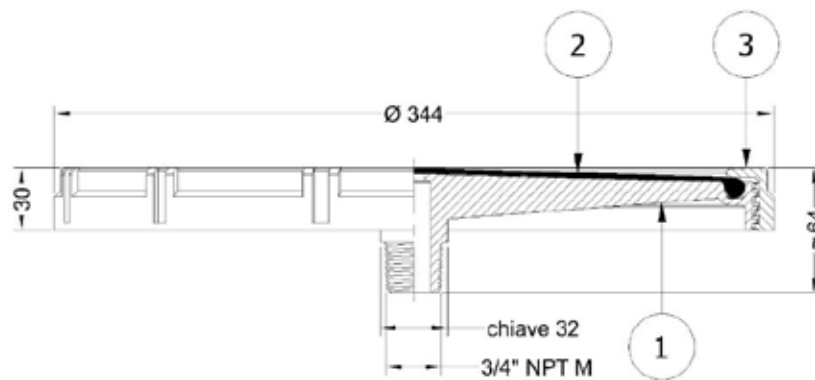
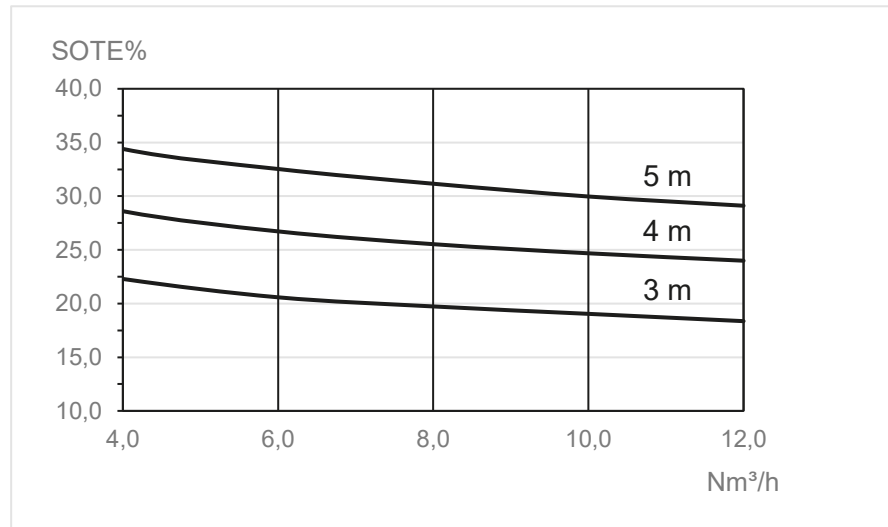
Membrane

Diffuser code	Average thickness [mm]	Shear strength [kg/cm ²]	Elongation [%]	Tear strength [N/mm]	Hardness	Plasticiser content in compound [%]
04072	2.2	> 88	450	> 40	70 Shore A	0
04073	2.2	> 88	450 _A	> 40	70 Shore A	

Note:

SOTE according to EN 12255-15
 Tolerance on thickness: ±0,2 mm
 Shear strength according to ISO 37 type 1
 Elongation according to ISO 37 type 1
 Tear strength according to ASTM D624/B

BA 12" Disc diffuser, fine bubble diffuser EPDM/EPDM+PTFE membrane



Pos.	Description	Material	Q.ty
1	Base	PPFG 30%	1
2	Retainer ring	PPFG 30%	1
3	Membrane	EPDM or EPDM+PTFE	1

Dimensions

Outer Diameter [mm]	Connection	Overall Height [mm]	Ret. Ring Height [mm]
344	3/4" NPT	64	30

Material

Diffuser code	Membrane	Membrane perforation	Number of perforations	Active surface [m²]	Holder	Retainer ring
4852485155	EPDM	1.2 - 2.0	> 5.200	0.064	PPFG 30%	PPFG 30%
4852485156	EPDM+PTFE	1.2 - 2.0	> 5.200	0.064	PPFG 30%	PPFG 30%

Performance

Diffuser code	Design range Airflow [Nm ³ /h]	Nominal airflow [Nm ³ /h]	Maximum airflow [Nm ³ /h]	Minimum airflow [Nm ³ /h]	Head loss ¹ [cm wc]
4852485155	3.0 - 13.0	8.0	16.0	2.0	36.0
4852485156	3.0 - 13.0	8.0	16.0	2.0	43.0

1. At nominal airflow and 4 m submergence

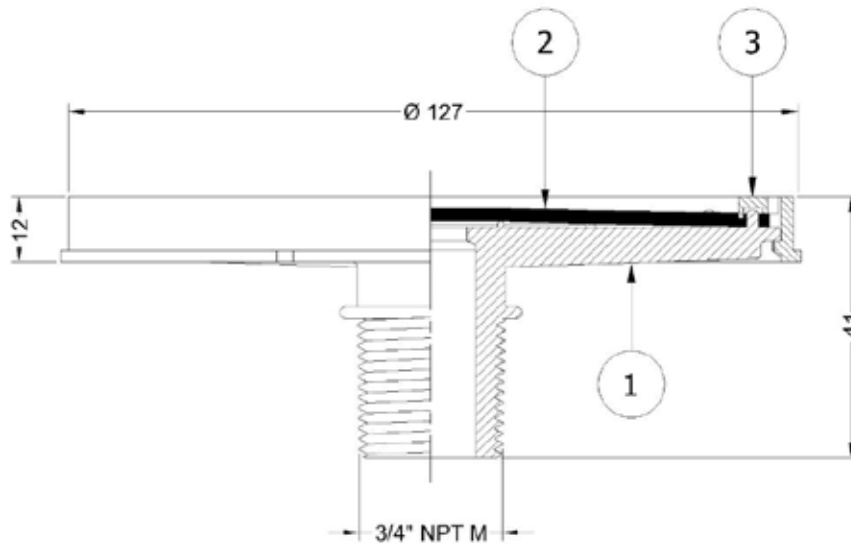
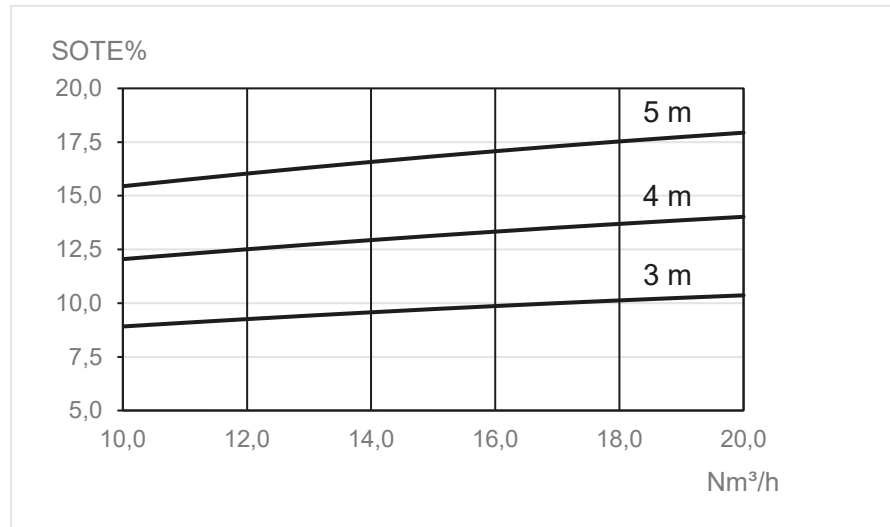
Membrane

Diffuser code	Average thickness [mm]	Shear strength [kg/cm ²]	Elongation [%]	Tear strength [N/mm]	Hardness	Plasticiser content in compound [%]
4852485155	2.2	> 140	600	> 5.0	60 Shore A	< 10
4852485156	2.3	> 140	600	> 5.0	60 Shore A	< 10

Note:

SOTE according to EN 12255-15
 Tolerance on thickness: ±0,2 mm
 Shear strength according to ISO 37 type 1
 Elongation according to ISO 37 type 1
 Tear strength according to ISO 34-1A

BA 5" Disc diffuser, coarse bubble diffuser EPDM membrane



Pos.	Description	Material	Q.ty
1	Base	ABS	1
2	Retainer ring	ABS	1
3	Membrane	EPDM	1

Dimensions

Outer Diameter [mm]	Connection	Overall Height [mm]	Ret. Ring Height [mm]
127	3/4" NPT	41	12

Material

Diffuser code	Membrane	Membrane perforation	Holder	Retainer ring
04032	EPDM	12 holes Ø 6 mm	ABS	ABS

Performance

Diffuser code	Design range Airflow [Nm ³ /h]	Nominal airflow [Nm ³ /h]	Maximum airflow [Nm ³ /h]	Minimum airflow [Nm ³ /h]	Head loss ¹ [cm WC]
04032	10.0 - 20.0	15.0	30.0	2.0	12.4

1. At nominal airflow and 4 m submergence

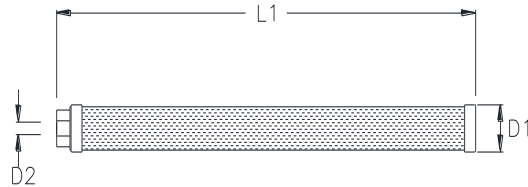
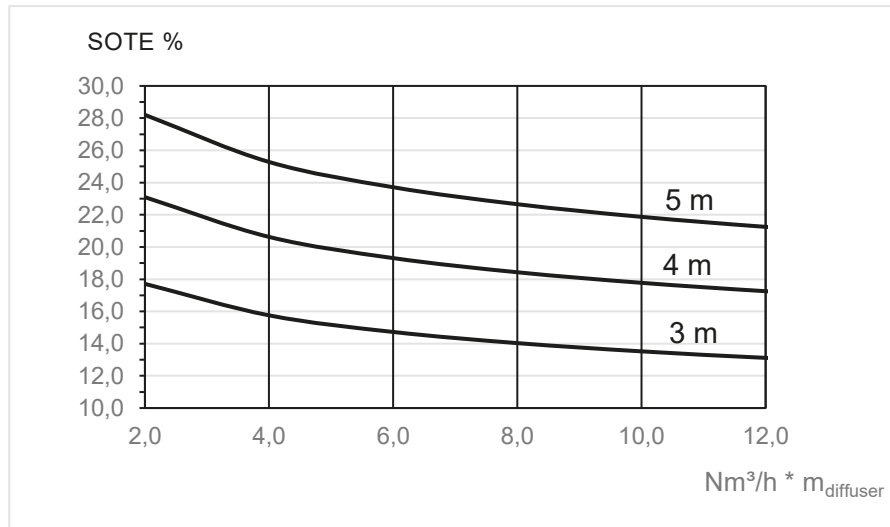
Membrane

Diffuser code	Average thickness [mm]	Shear strength [kg/cm ²]	Elongation [%]	Tear strength [N/mm]	Hardness	Plasticiser content in compound [%]
04032	2.3	> 140	600	> 5.0	60 Shore A	< 10

Note:

SOTE according to EN 12255-15
 Tolerance on thickness: ±0.2 mm
 Shear strength according to ISO 37 type 1
 Elongation according to ISO 37 type 1
 Tear strength according to ISO 34-1A

Threaded connection



Pos.	Description	Material	Q.ty
1	Holder/Connector	PVC/ABS	1
2	Membrane	EPDM	1
3	Clamp	A2	2

Dimensions

Diffuser code	D1 [mm]	L1 [mm]	m _{diffuser} perforated zone [mm]	D2
4852494853	63 (2")	560	500	ISO G 3/4"
4852494854	63 (2")	810	750	ISO G 3/4"
4852494855	63 (2")	1060	1000	ISO G 3/4"

Material

Diffuser code	Membrane	Membrane perforation	Number of perforation	Active surface [m²]	Holder	Connector
4852494853	EPDM	1.25-2.25	12.000	0.090	PVC	ABS
4852494854	EPDM	1.25-2.25	18.800	0.135	PVC	ABS
4852494855	EPDM	1.25-2.25	24.000	0.180	PVC	ABS

Performance

	Design range Airflow [Nm ³ /h]	Nominal airflow [Nm ³ /h]	Maximum airflow [Nm ³ /h]	Minimum airflow [Nm ³ /h]	Head loss ¹ [cmWC]
4852494853	2.0 - 6.0	4.0	10.0	1.0	54.0
4852494854	3.0 - 9.0	6.0	15.0	1.5	
4852494855	4.0 - 12.0	8.0	20.0	2.0	

1. At nominal airflow and 4 m submergence

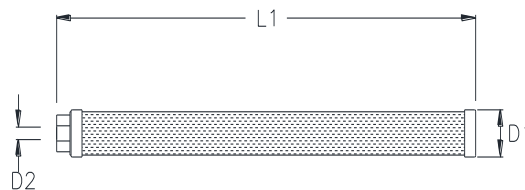
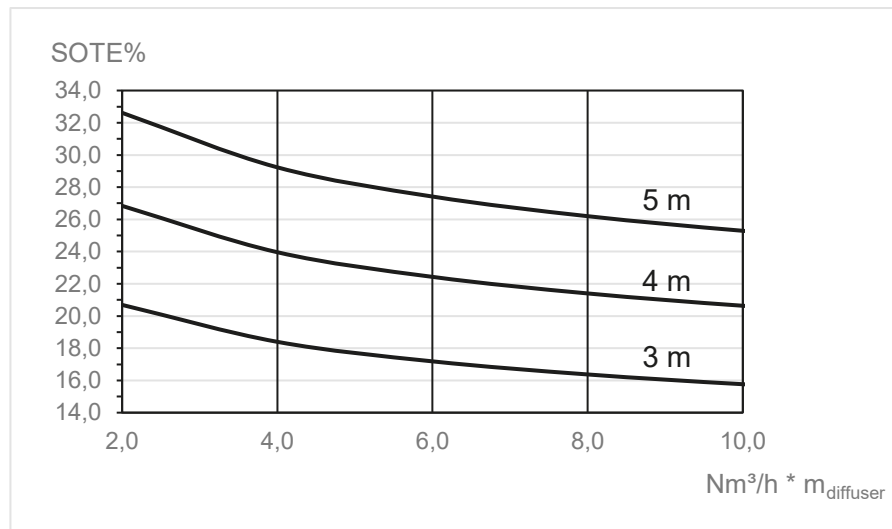
Membrane

Average thickness [mm]	Shear strength [kg/cm ²]	Elongation [%]	Tear strength [Kg/m]	Hardness	Plasticiser content in EPDM compound [%]
1.7	> 60	400	> 600	40 Shore A	30

Note:

SOTE according to EN 12255-15
 Tolerance on thickness: ±0,2 mm
 Shear strength according to ISO 37 type 1
 Elongation according to ISO 37 type 1
 Tear strength according to ISO 34-1A

Threaded connection



Pos.	Description	Material	Q.ty
1	Holder/Connector	PVC/ABS	1
2	Membrane	Silicone	1
3	Clamp	A2	2

Dimensions

Diffuser code	D1 [mm]	L1 [mm]	m _{diffuser} perforated zone [mm]	D2
4852485753	63 (2")	560	500	ISO G 3/4"
4852485754	63 (2")	810	750	ISO G 3/4"
4852485755	63 (2")	1060	1000	ISO G 3/4"

Material

Diffuser code	Membrane	Membrane perforation	Number of perforation	Active surface [m²]	Holder	Connector
4852485753	Silicone	1.0 – 3.0	7.500	0.090	PVC	ABS
4852485754	Silicone	1.0 – 3.0	11.250	0.135	PVC	ABS
4852485755	Silicone	1.0 – 3.0	15.000	0.180	PVC	ABS

Performance

	Design range Airflow [Nm ³ /h]	Nominal airflow [Nm ³ /h]	Maximum airflow [Nm ³ /h]	Minimum airflow [Nm ³ /h]	Head loss ¹ [cmWC]
4852485753	2.0 - 5.0	4.0	8.0	1.0	38.0
4852485754	4.0 - 8.0	6.0	12.0	1.5	
4852485755	6.0 - 10.0	8.0	16.0	2.0	

1. At nominal airflow and 4 m submergence

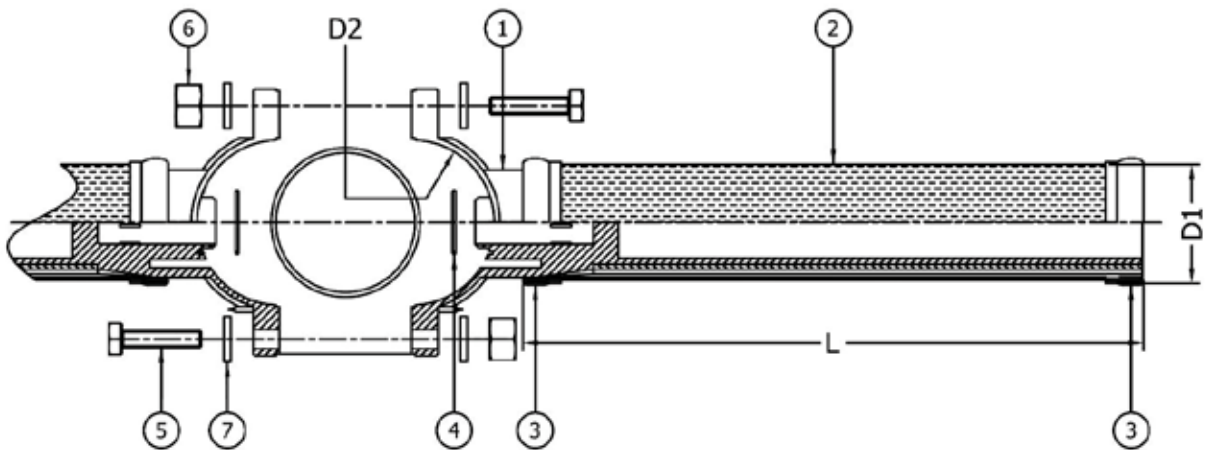
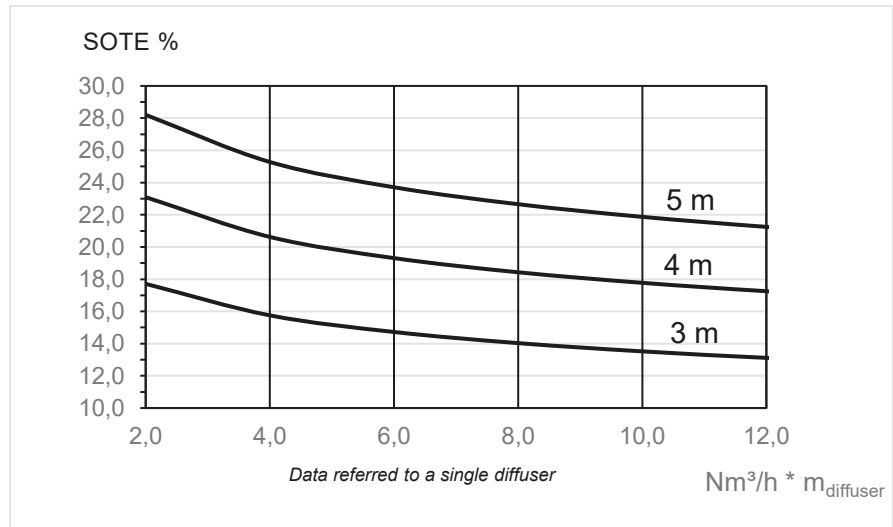
Membrane

Average thickness [mm]	Shear strength [kg/cm ²]	Elongation [%]	Tear strength [Kg/m]	Hardness	Plasticiser content in EPDM compound [%]
1.5	> 60	400	> 600	60 Shore A	0

Note:

SOTE according to EN 12255-15
 Tolerance on thickness: ±0,2 mm
 Shear strength according to ISO 37 type 1
 Elongation according to ISO 37 type 1
 Tear strength according to ASTM D624/B

Saddle connection



Pos.	Description	Material	Q.ty per couple
1	Holder& Saddle	PPFG 30%	2
2	Membrane	EPDM	2
3	Clamp	A2	2
4	O-R	EPDM	2
5	Screw M8x45	A2	2
6	Self locking nut M8	A2	2
7	Washer M8	A2	4

Dimensions

Diffuser code	D1 [mm]	L [mm]	m _{diffuser} perforated zone [mm]	D2
4852504954	63 (2")	675	500	D90
4852504955	63 (2")	675	500	D110
4852504956	63 (2")	675	500	D114,3
4852504957	63 (2")	925	750	D90
4852505048	63 (2")	925	750	D110
4852505049	63 (2")	925	750	D114,3
4852505050	63 (2")	1175	1000	D90
4852505051	63 (2")	1175	1000	D110
4852505052	63 (2")	1175	1000	D114,3

Material¹

Diffuser code	Membrane	Membrane perforation	Number of perforation	Active surface [m ²]	Holder & Saddle	Nuts Bolts & Washer
4852504954/4852504955/ 4852504956	EPDM	1.25 - 2.25	12.000	0.090	PPFG 30%	A2
4852504957/4852505048/ 4852505049	EPDM	1.25 - 2.25	18.800	0.135	PPFG 30%	A2
4852505050/4852505051/ 4852505052	EPDM	1.25 - 2.25	24.000	0.180	PPFG 30%	A2

Performance¹

Diffuser code	Design range Airflow [Nm ³ /h]	Nominal airflow [Nm ³ /h]	Maximum airflow [Nm ³ /h]	Minimum airflow [Nm ³ /h]	Head loss ² [cmWC]
4852504954/044217/ 4852504956	2.0 - 6.0	4.0	10.0	1.0	
4852504957/4852505048/ 4852505049	3.0 - 9.0	6.0	15.0	1.5	38.0
4852505050/4852505051/ 4852505052	4.0 - 12.0	8.0	20.0	2.5	

¹ Data referred to a single diffuser

² At nominal airflow and 4 m submergence

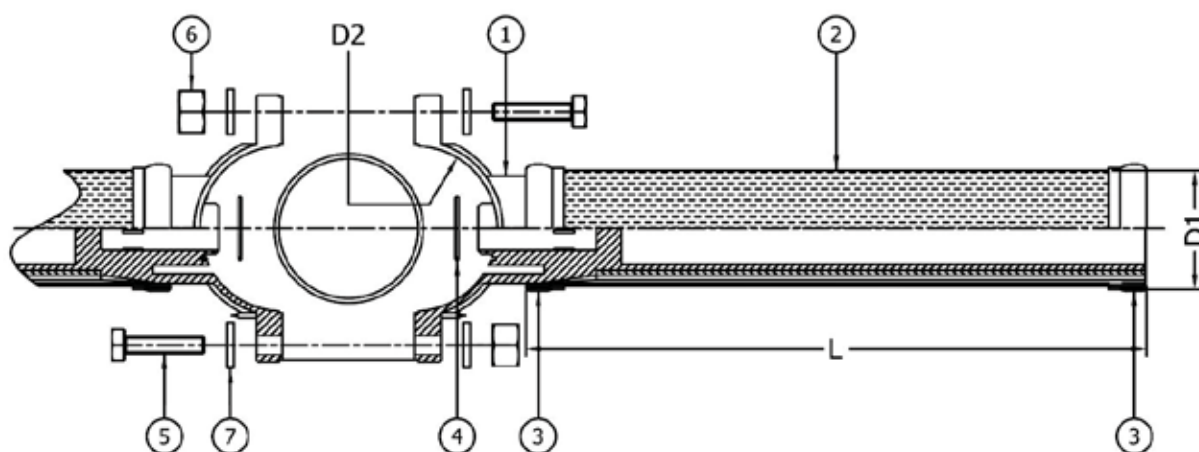
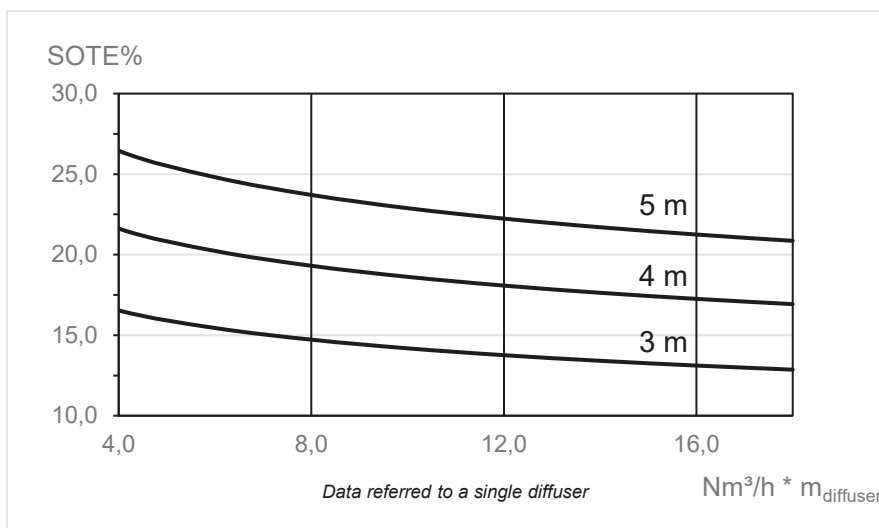
Membrane

Average thickness [mm]	Shear strength [kg/cm ²]	Elongation [%]	Tear strength [Kg/m]	Hardness	Plasticiser content in EPDM compound [%]
1.7	> 60	400	> 600	40 Shore A	30

Note:

SOTE according to EN 12255-15
 Tolerance on thickness: ±0,2 mm
 Shear strength according to ISO 37 type 1
 Elongation according to ISO 37 type 1
 Tear strength according to ISO 34-1A

Saddle connection



Pos.	Description	Material	Q.ty per couple
1	Holder& Saddle	PPFG 30%	2
2	Membrane	EPDM	2
3	Clamp	A2	2
4	O-R	EPDM	2
5	Screw M8x45	A2	2
6	Self locking nut M8	A2	2
7	Washer M8	A2	4

Dimensions

Diffuser code	D1 [mm]	L [mm]	m _{diffuser} perforated zone [mm]	D2
4852505053	90 (3")	695	500	D110
4852505054	90 (3")	695	500	D114,3
4852505055	90 (3")	945	750	D110
4852505056	90 (3")	945	750	D114,3
4852505057	90 (3")	1195	1000	D110
4852505148	90 (3")	1195	1000	D114,3

Material

Diffuser code	Membrane	Membrane perforation	Number of perforation ¹	Active surface [m ²]	Holder & Saddle	Nuts Bolts & Washer
4852505053/4852505054	EPDM	1.0 – 1.5	14.300	0.120	PPFG 30%	A2
4852505055/4852505056	EPDM	1.0 – 1.5	21.400	0.180	PPFG 30%	A2
4852505057/4852505148	EPDM	1.0 – 1.5	28.600	0.240	PPFG 30%	A2

Performance¹

Diffuser code	Design range Airflow [Nm ³ /h]	Nominal airflow [Nm ³ /h]	Maximum airflow [Nm ³ /h]	Minimum airflow [Nm ³ /h]	Head loss ² [cm wc]
4852505053/4852505054	3.0 - 10.0	5.0	15.0	2.0	36.0
4852505055/4852505056	4.0 – 15.0	7.5	25.0	2.5	
4852505057/4852505148	5.0 - 20.0	10.0	30.0	2.5	

¹ Data referred to a single diffuser

² At nominal airflow and 4 m submergence

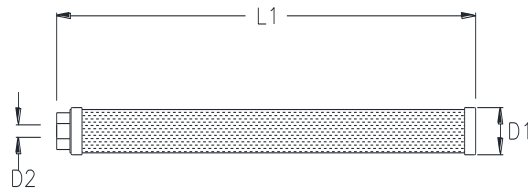
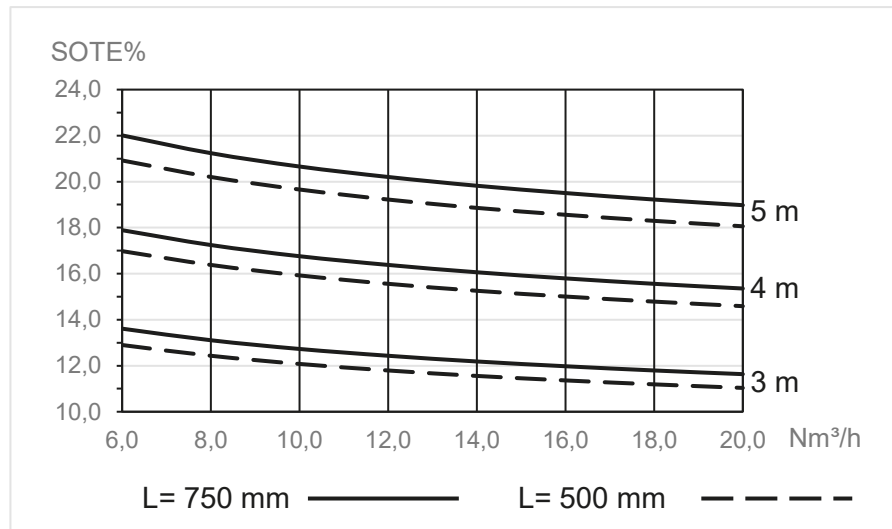
Membrane

Average thickness [mm]	Shear strength [kg/cm ²]	Elongation [%]	Tear strength [Kg/m]	Hardness	Plasticiser content in EPDM compound [%]
1.9	> 60	400	> 600	40 Shore A	30

Note:

SOTE according to EN 12255-15
Tolerance on thickness: ±0,2 mm
Shear strength according to ISO 37 type 1
Elongation according to ISO 37 type 1
Tear strength according to ISO 34-1A

Threaded connection



Dimensions

Diffuser code	D1 [mm]	L1 [mm]	m _{diffuser} perforated zone [mm]	D2
4852505157	90 (3")	570	500	ISO G 3/4"
4852505348	90 (3")	820	750	ISO G 3/4"

Material

Diffuser code	Membrane	Membrane perforation	Number of perforation	Active surface [m²]	Holder	Connector
4852505157	EPDM	2.0 - 2.0	10.500	0.120	PVC	ABS
4852505348	EPDM	2.0 - 2.0	15.500	0.180	PVC	ABS

Performance

Diffuser code	Design range Airflow [Nm ³ /h]	Nominal airflow [Nm ³ /h]	Maximum airflow [Nm ³ /h]	Minimum airflow [Nm ³ /h]	Head loss ¹ [cmWC]
4852505157	6.0 - 15.0	7.5	20.0	2.0	45.0
4852505348	8.0 - 20.0	10.0	30.0	2.0	

1. At design airflow and 4 m submergence

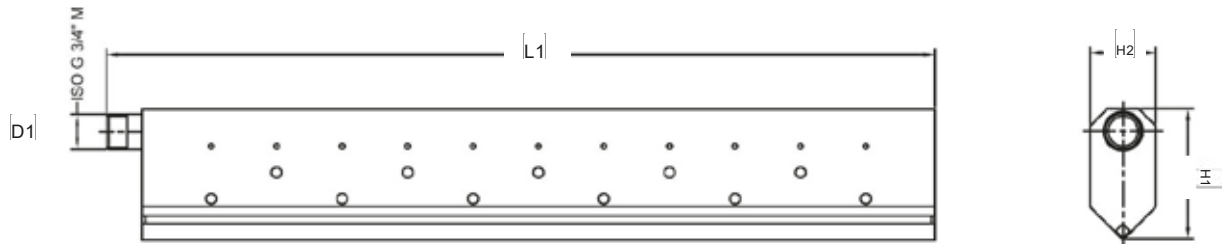
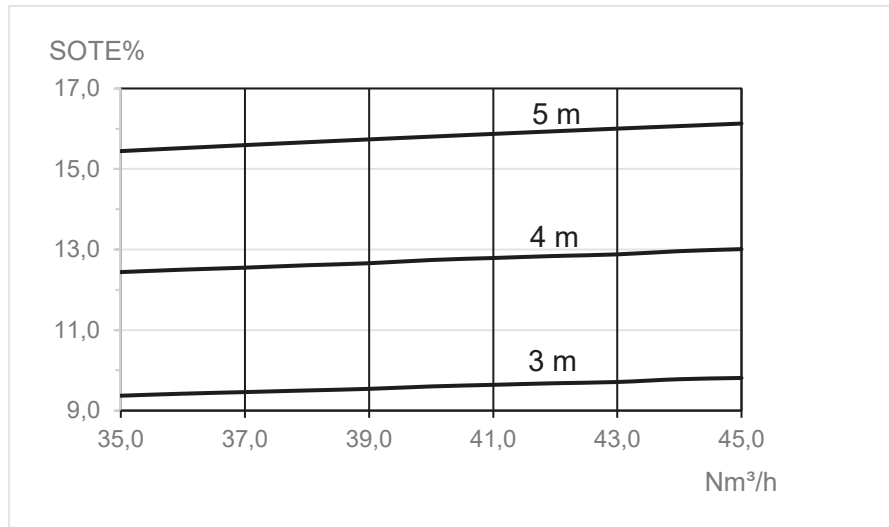
Membrane

Average thickness [mm]	Shear strength [kg/cm ²]	Elongation [%]	Tear strength [Kg/m]	Hardness	Plasticiser content in EPDM compound [%]
1.9	> 60	400	> 600	40 Shore A	30

Note:

SOTE according to EN 12255-15
 Tolerance on thickness: ±0,2 mm
 Shear strength according to ISO 37 type 1
 Elongation according to ISO 37 type 1
 Tear strength according to ISO 34-1A

Maxtube, stainless steel coarse bubble diffuser



Dimensions

Diffuser code	L1 [mm]	D1 [mm]	H2 [mm]	H1 [mm]	Connection
4852494848	606	28	50	100	ISO G 3/4" M

Material

Diffuser code	Material	Diameter of holes (upper row) [mm]	Diameter of holes (lower row) [mm]
4852494848	Stainless steel AISI 316L	4	8

Performance

Diffuser code	Design range Airflow [Nm³/h]	Nominal airflow [Nm³/h]	Maximum airflow [Nm³/h]	Minimum airflow [Nm³/h]	Head loss ¹ [cmWC]
4852494848	35.0 - 45.0	40.0	80.0	7.0	9.5

1. At nominal airflow and 4 m submergence

Note:

SOTE according to EN 12255-15



Klinger Portugal, Lda.
Via José Régio, 36
Centro Empresarial Vilar do Pinheiro
4485-860 Vila do Conde
T: +351 22 947 0910
E-mail: geral@klinger.pt

Delegação Lisboa
Rua de Cabo Verde, 8
Prior Velho 2685-316
T: +351 21 940 6620
E-mail: lisboa@klinger.pt