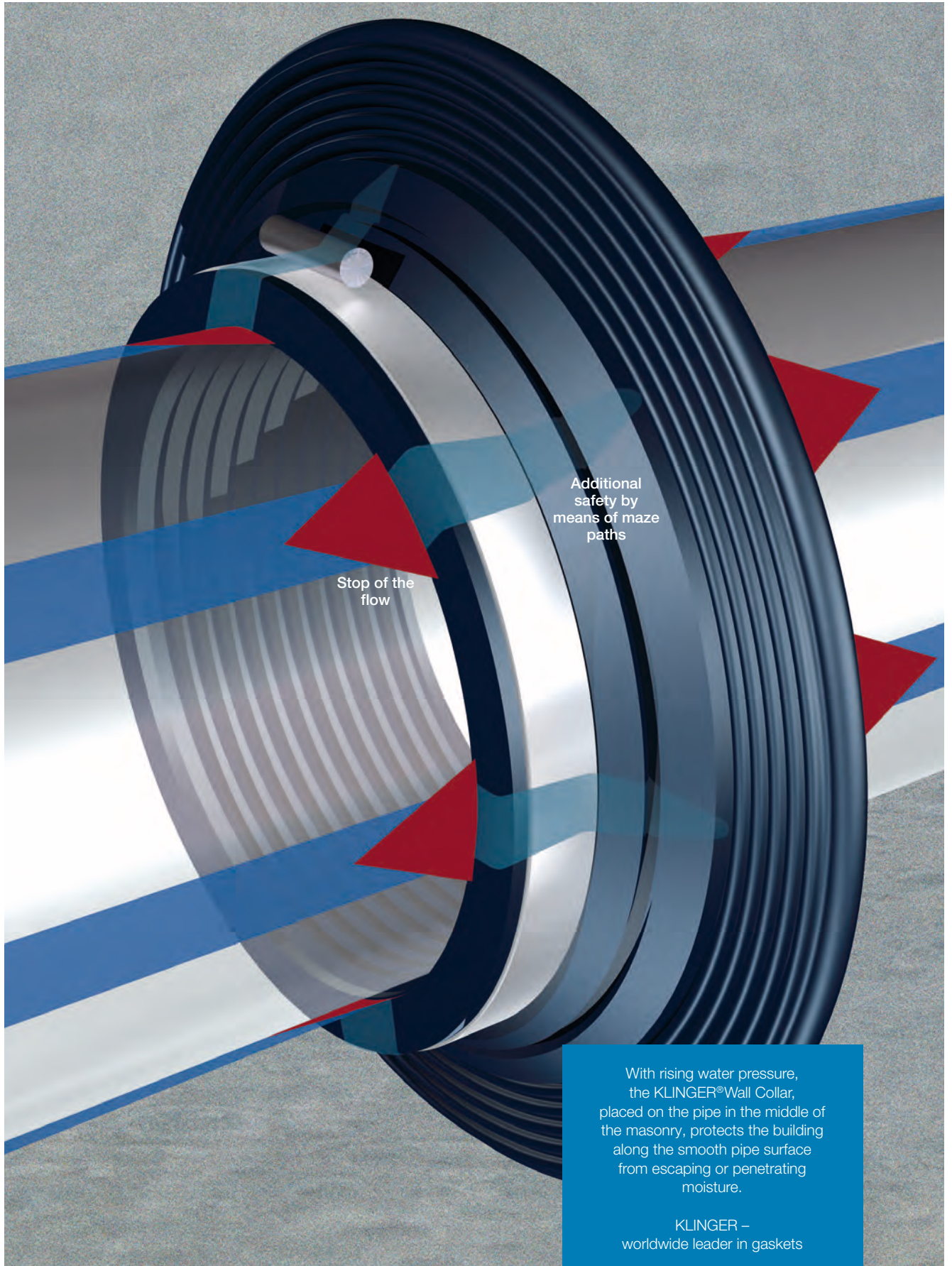


# KLINGER® Wall Collar

Perfectly sealing pipes in masonry



With rising water pressure, the KLINGER® Wall Collar, placed on the pipe in the middle of the masonry, protects the building along the smooth pipe surface from escaping or penetrating moisture.

KLINGER –  
worldwide leader in gaskets

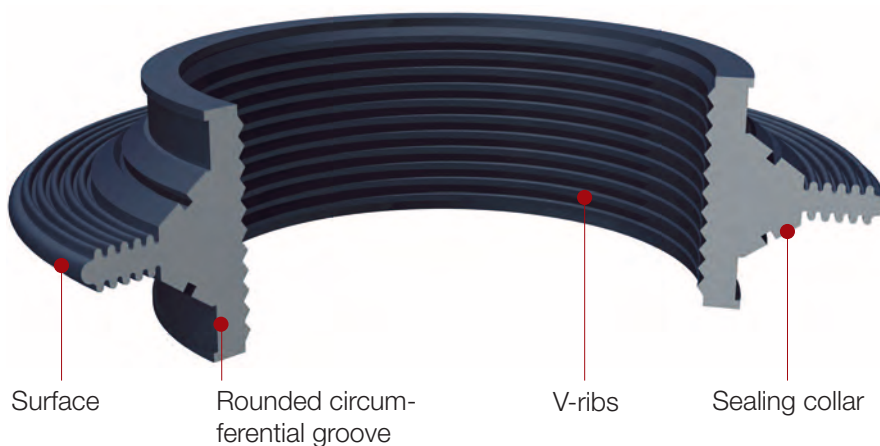
# KLINGER® Wall Collar

Type 7/5\* made of EPDM

It is used wherever pipelines are guided through masonry brick-work, walls and floor slabs. With rising water pressure, ground water or increased underground water level in the area of watercourses/rivers, the KLINGER® Wall Collar, placed in the middle of the masonry on the pipe, reliably protects the building from penetrating moisture.

With swimming pools and floor pans, the KLINGER® Wall Collar protects against escaping water or the ground from escaping liquids.

The KLINGER® Wall Collar is pressure-tight up to 8 bar and approved by the TÜV.



## Special features of the KLINGER® Wall Collar

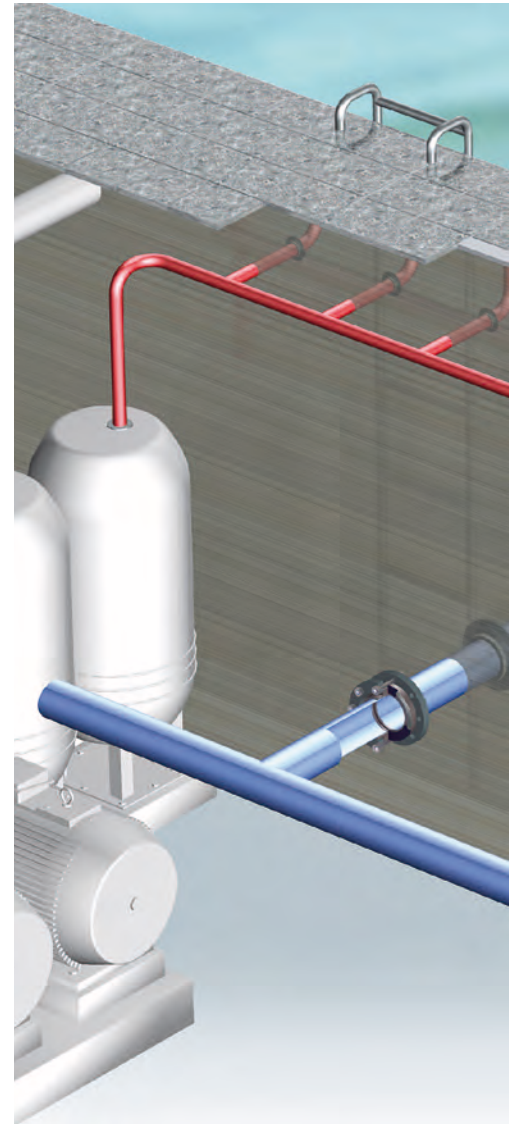
On its inner diameter V-ribs that are complex in shape and which fit closely and tightly even on uneven pipe surfaces. The multitude of V-ribs ensures a good sealing function of the masonry collar.

The 70 mm wide KLINGER® Wall Collar guarantees safe hold with all pipe materials.

The design and material selection (EPDM) ensure long-term dimensional stability and safety when fixing it in the wall.

In case of extreme installation conditions, the particularly pronounced profile depth at the sealing collar ensures stable hold in the filling material.

\*Type 7/5 means that every KLINGER® Wall Collar is manufactured in a width of 70 mm and a height of 50 mm.



When filling in KLINGER® Wall Collars that are mounted horizontally, the rounded surface also allows for good penetration of the filling material.

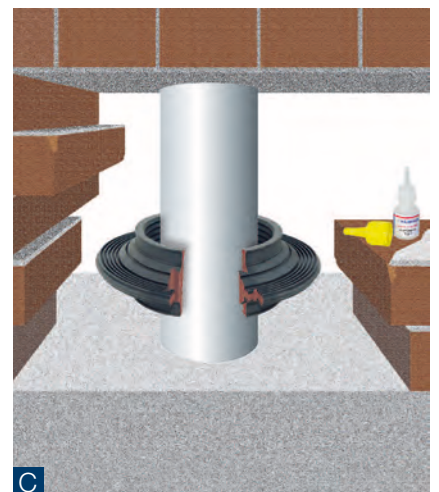
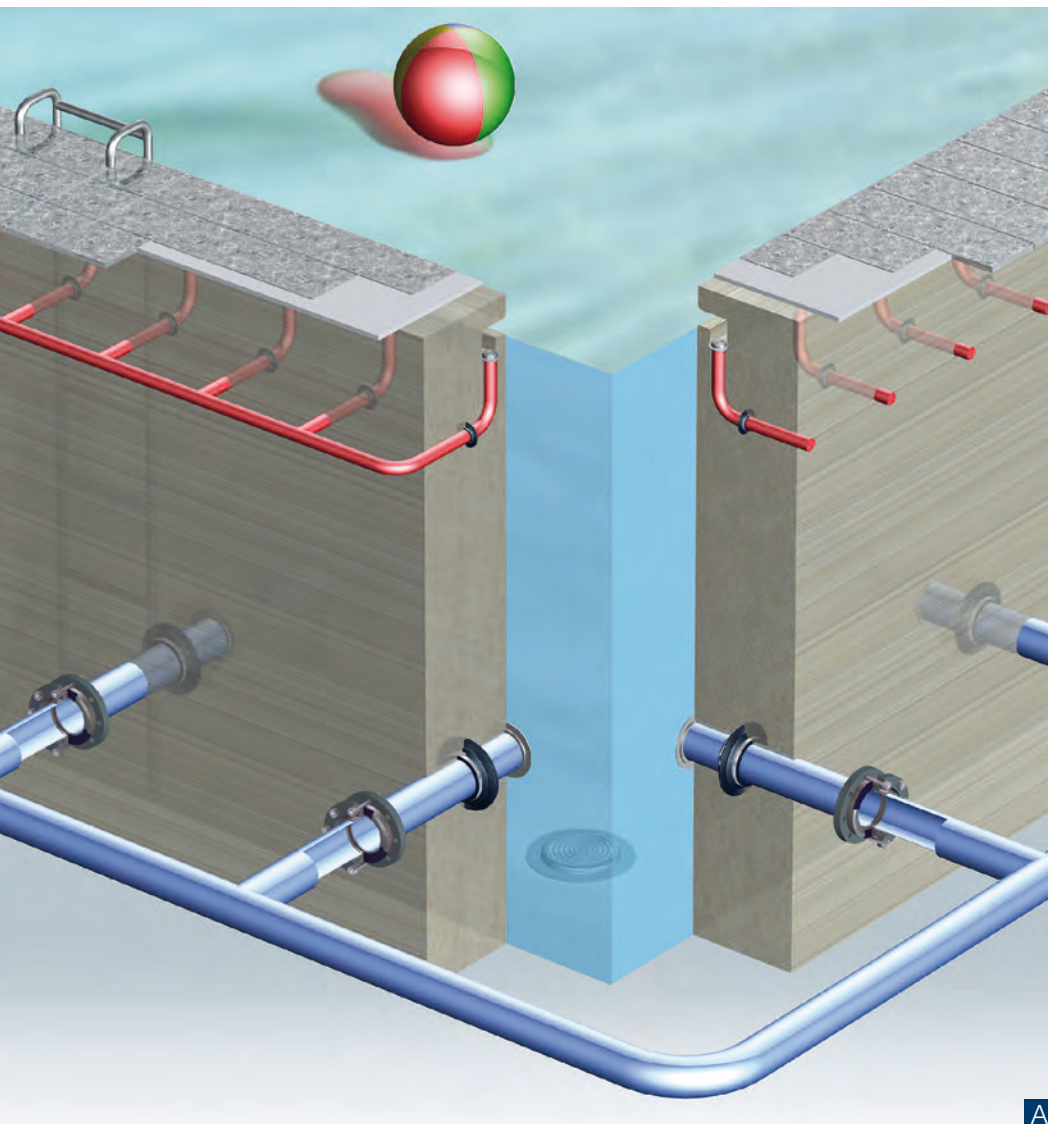
The circumferential groove, brought in on both sides from the outside, ensures faultless mounting of non-corrosive clamping belts. The clamping belts are adjusted to the dimensions of the KLINGER® Wall Collar.

The elasticity of the KLINGER® Wall Collar allows for installation of pipes made of plastic, clay pipes, concrete, cast iron, steel and coated pipes.



# KLINGER® Wall Collar

Type 7/5\* made of EPDM



## Mounting instructions

KLINGER® Wall Collars have a marking providing the diameter on both sides.

For all types of pipes, the pipe surface must be clean and without grooves and scores.

The KLINGER® Wall Collar is pushed onto the pipe and placed in the middle of the masonry.

Neutral soap can be applied onto the pipe as a mounting aid.

The clamping belts are tightened by means of a hexagon wrench or a screwdriver. Now the masonry collar area can be filled using filling material, concrete or similar.

The minimum overlap should not be less than 3 cm.

## A B

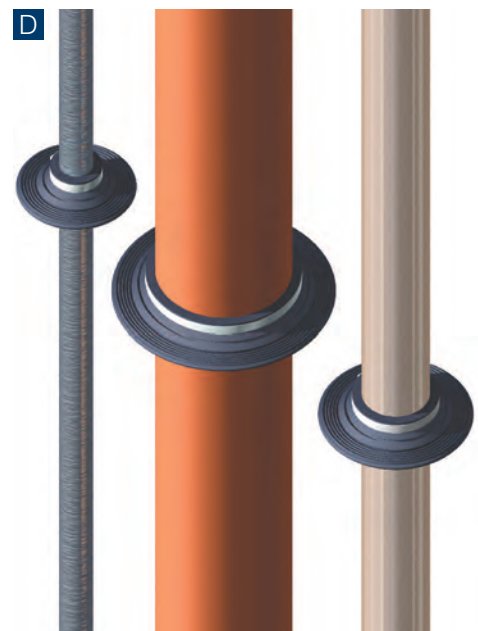
The KLINGER® Wall Collar is ideal for swimming pools and buildings, protecting against escaping or penetrating moisture along the smooth pipe surface.

## C

The KLINGER® Wall Collar is also available in an open version (MK 7/5 OP) for retrofitting.

## D

The KLINGER® Wall Collar can be used for all pipe materials, such as steel pipes, plastic pipes, coated pipes, clay pipes, concrete and cast iron pipes.



# KLINGER® Wall Collar

## Dimensions at a glance

Dimensions in mm.

The KLINGER® Wall Collar is manufactured from EPDM as standard. Other materials, such as NBR with particular approvals for installation in difficult environments, are possible.

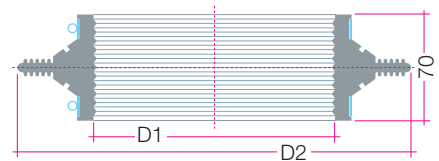
We also manufacture the masonry collars according to your wishes. To do so, please state the exact outside diameter of the pipe. Production is possible up to DN 10,000.

KLINGER also offers the MK7/5OP for retrofitting. This version is available in every dimension. Production takes place according to your details (pipe outside diameter OD).

The KLINGER® Wall Collar is supplied with clamps as standard. Mounting takes place without special tools.

DN	OD Ø	D1 Ø	D2 Ø
20	25	22	127
25	32	29	127
32	40	38	136
40	50	48	146
50	63	60	158
65	75	71	169
80	90	84	182
100	110	105	203
125	125	120	218
125	140	135	228
150	160	154	252
175	180	175	273
175	200	195	293
200	225	215	315
225	250	245	343
250	280	275	373
300	315	310	408
350	355	352	435
400	400	395	480

DN	OD Ø	D1 Ø	D2 Ø
450	450	442	540
500	500	490	588
550	560	547	645
600	630	613	711
700	710	690	788
800	800	775	873
900	900	870	968
1000	1000	965	1063
1200	1200	1155	1253
1400	1400	1345	1443
1600	1600	1535	1633
1800	1800	1725	1823
2000	2000	1915	2013



### KLINGER offers you excellent sealing products for all fields of application

KLINGER®KGS



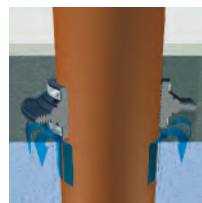
KLINGER®KGS/TK



KLINGER®KGS-Flon



KLINGER®KGS/MK



KLINGER®KGS/VD



KLINGER®KNS



Certified according to  
DIN EN ISO 9001:2008



Subject to technical changes.  
Status: May 2015



Klinger Portugal, Lda.  
Via José Régio, 36  
Centro Empresarial Vilar do Pinheiro  
4485-860 Vila do Conde  
T: +351 22 947 0910  
E-mail: geral@klinger.pt

Delegação Lisboa  
Rua de Cabo Verde, 8  
Prior Velho 2685-316  
T: +351 21 940 6620  
E-mail: lisboa@klinger.pt