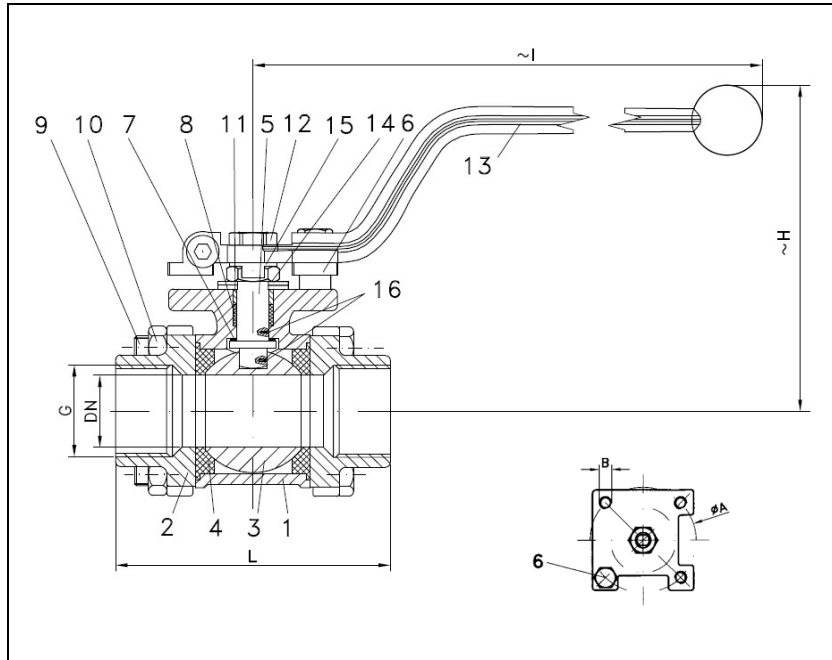


BALL VALVES RK-PROBALL

KH 3T M (NC), 1/4" - 4", PN63/100

casting lever



Ball valves RK-Proball KH 3T all sizes are also available with pneumatical, electrical or hydraulic actuators.

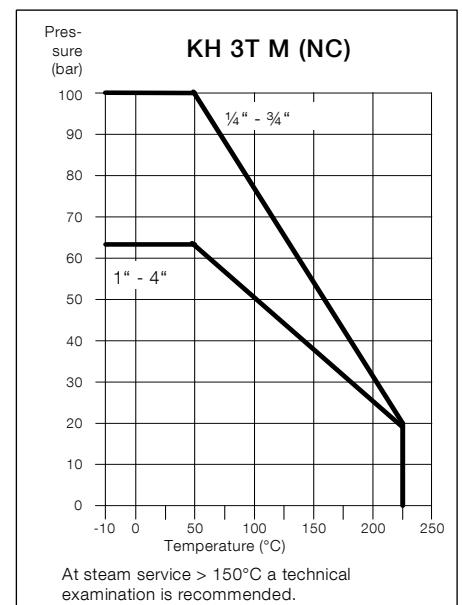
No.	Part	Material	Material
1	body	1.0619	1.4408
2	cap	1.0619	1.4408
3	ball	1.4408	
4	seat	KFG	
5	stem	1.4401	
6	stop pin	1.4301	
7	washer	KFG	
8	stem packing	KF	
9	hex. screw	A2-70	
10	hex. nut	A2-70	
11	thrust washer	1.4301	
12	hex. nut	A2-70	
13	lever	1.4301	
14	plate spring	1.4310	
15	locking plate	1.4301	
16	antistatic element	1.4401	

Ball valve with threaded ends acc. to EN 10226-1 / EN ISO 228-1
full bore
face to face acc. to DIN 3202-M3

Specification:

Three-piece ball valve, threaded ends acc. to EN 10226-1 / EN ISO 228-1, face to face dimensions acc. to DIN 3202-M3, full bore, blow-out-proof stem, body material stainless steel (1.4408) or steel (1.0619), antistatic device, free of non ferrous metals, seat KFG, stem packing KF, disc spring loaded adjustable, top flange DIN EN ISO 5211, approved by PED, certified acc. to GERMAN clean air act VDI 2440, with lever.

Marking: RK-Proball
Types: KH 3T M (NC)-1.0619
KH 3T M (NC)-1.4408



Ordering example:
KH 3T M (NC), 2", PN 63, 1.4408

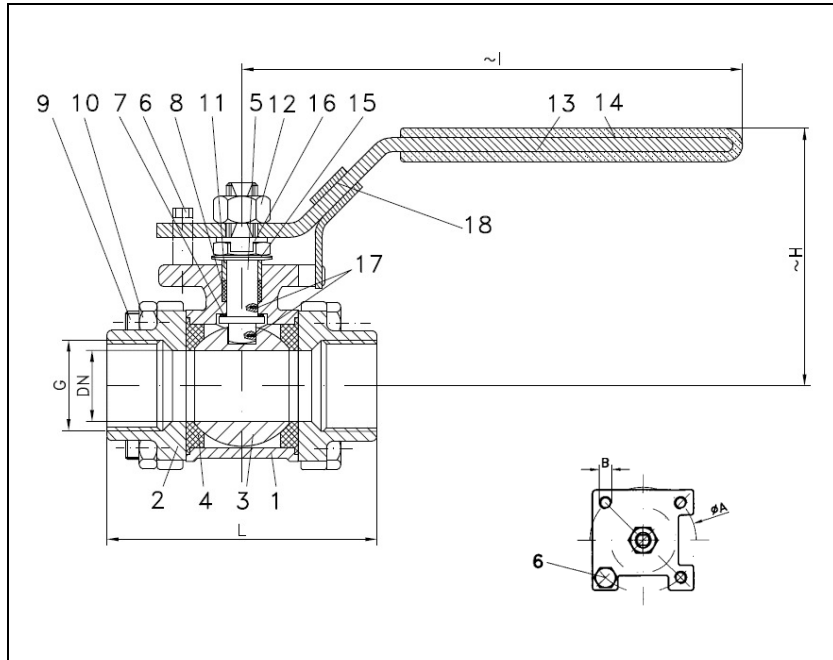
Dimensions

DN mm	G inch	PN	dimensions (mm)			top flange ISO 5211		Kv-value m³/h	torque Nm	weight kg	
			H	I	L	Ø A	B				
10.6	1/4	100	72	154	50	F03	36	M5	6	3	0.5
12.7	3/8	100	72	154	60	F03	36	M5	7	3	0.5
15	1/2	100	86	169	75	F04	42	M5	10	5	0.7
20	3/4	100	93	169	80	F04	42	M5	25	10	0.9
25	1	63	105	222	90	F05	50	M6	35	11	1.3
32	1 1/4	63	110	222	110	F05	50	M6	46	20	2.2
38	1 1/2	63	124	222	120	F05	50	M6	80	26	2.8
49	2	63	146	304	140	F07	70	M8	110	30	4.4
65	2 1/2	63	170	304	185	F07	70	M8	310	70	9.8
80	3	63	176	354	205	F10	102	M10	360	90	14.8
100	4	63	207	354	240	F10	102	M10	820	120	25.4

BALL VALVES RK-PROBALL

KH 3T M (NC), 1/4" - 4", PN63/100

safety spring locking device



Ball valves RK-Proball KH 3T all sizes are also available with pneumatical, electrical or hydraulic actuators.

No.	Part	Material	Material
1	body	1.0619	1.4408
2	cap	1.0619	1.4408
3	ball	1.4408	
4	seat	KFG	
5	stem	1.4401	
6	stop pin	1.4301	
7	washer	KFG	
8	stem packing	KF	
9	hex. nut	A2-70	
10	hex. screw	A2-70	
11	thrust washer	1.4301	
12	hex. nut	A2-70	
13	lever	1.4301	
14	insulation cover	Vinyl	
15	plate spring	1.4310	
16	locking plate	1.4301	
17	antistatic element	1.4401	
18	spring locking device	1.4301	

Ball valve with threaded ends acc. to EN 10226-1 / EN ISO 228-1

full bore

face to face acc. to DIN 3202-M3

Specification:

Three-piece ball valve, threaded ends acc. to EN 10226-1 / EN ISO 228-1, face to face dimensions acc. to DIN 3202-M3, full bore, blow-out-proof stem, body material stainless steel (1.4408) or steel (1.0619), antistatic device, free of non ferrous metals, seat KFG, stem packing KF, disc spring loaded adjustable, top flange DIN EN ISO 5211, approved by PED, certified acc. to GERMAN clean air act VDI 2440, lever with safety spring locking device.

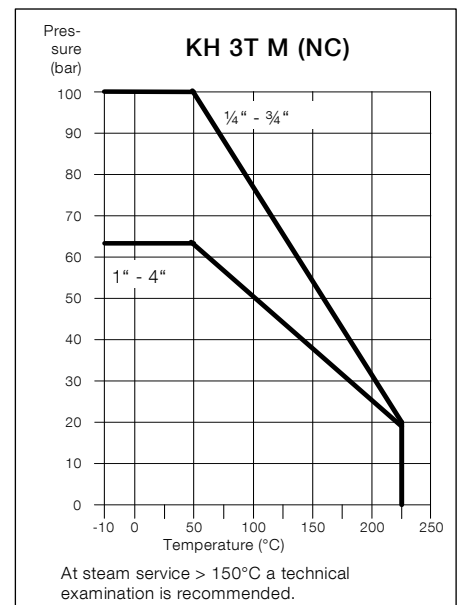
Marking:

RK-Proball

Types:

KH 3T M (NC)-1.0619

KH 3T M (NC)-1.4408



Ordering example:

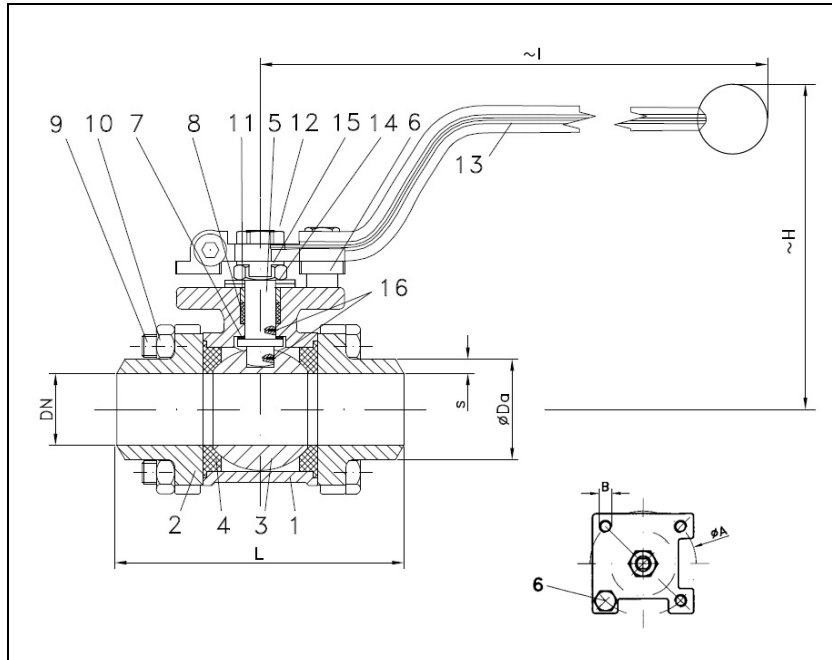
KH 3T M (NC), 2", PN 63, 1.4408, safety spring locking device

Dimensions

DN mm	G inch	PN	dimensions (mm)			top flange ISO 5211			Kv-value m³/h	torque Nm	weight kg
			H	I	L	Ø A	B				
10.6	1/4	100	63	118	50	F03	36	M5	6	3	0.5
12.7	3/8	100	63	118	60	F03	36	M5	7	3	0.5
15	1/2	100	67	135	75	F04	42	M5	10	5	0.7
20	3/4	100	73	135	80	F04	42	M5	25	10	0.9
25	1	63	80	168	90	F05	50	M6	35	11	1.3
32	1 1/4	63	87	168	110	F05	50	M6	46	20	2.2
38	1 1/2	63	103	205	120	F05	50	M6	80	26	2.8
49	2	63	112	218	140	F07	70	M8	110	30	4.4
65	2 1/2	63	156	280	185	F07	70	M8	310	70	9.8
80	3	63	163	376	205	F10	102	M10	360	90	14.8
100	4	63	194	376	240	F10	102	M10	820	120	25.4

BALL VALVES RK-PROBALL

KH 3T S (NC), 1/4" - 4", PN63/100
casting lever



Ball valves RK-Proball KH 3T all sizes are also available with pneumatical, electrical or hydraulic actuators.

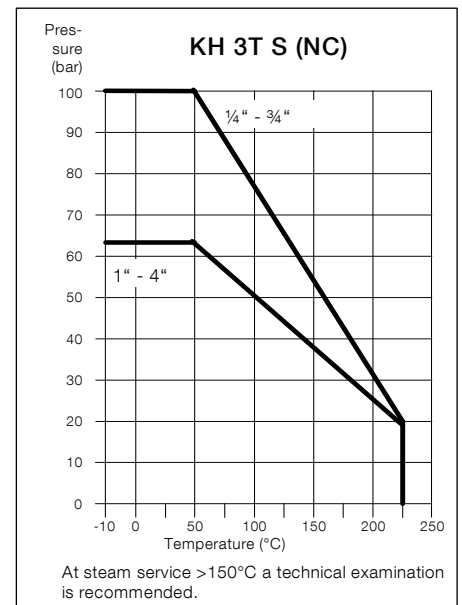
No.	Part	Material	Material
1	body	1.0619	1.4408
2	cap	1.0619	1.4408
3	ball		1.4408
4	seat		KFG
5	stem		1.4401
6	stop pin		1.4301
7	washer		KFG
8	stem packing		KF
9	hex. schrew		A2-70
10	hex. nut		A2-70
11	thrust washer		1.4301
12	hex. nut		A2-70
13	lever		1.4301
14	plate spring		1.4310
15	locking plate		1.4301
16	antistatic element		1.4401

Ball valve with butt weld ends
full bore
face to face acc. to DIN 3202-S13
butt weld ends acc. to EN 12627

Specification:

Three-piece ball valve, butt weld ends acc. to EN 12627, face to face dimensions acc. to DIN 3202-S13, full bore, blow-out-proof stem, body material stainless steel (1.4408) or steel (1.0619), antistatic device, free of non ferrous metals, seat KFG, stem packing KF, disc spring loaded adjustable, top flange DIN EN ISO 5211, approved by PED, certified acc. to GERMAN clean air act VDI 2440, with lever.

Marking: RK-Proball
Types: KH 3T S (NC)-1.0619
KH 3T S (NC)-1.4408



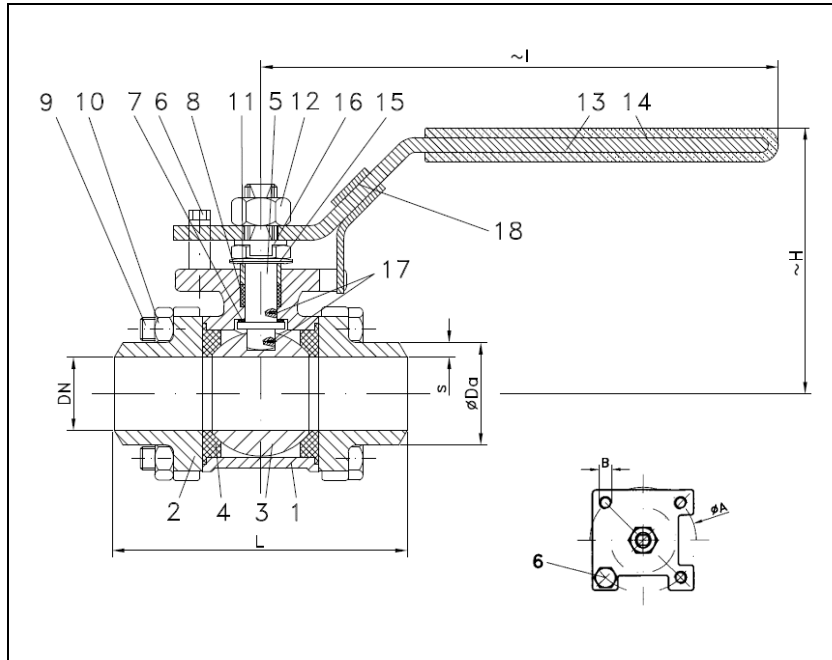
Ordering example:
KH 3T S (NC), 2", PN 63, 1.4408,

Dimensions

DN mm	DN inch	PN	dimensions (mm)					top flange ISO 5211		Kv-value m ³ /h	torque Nm	weight kg	
			Ø Da	S	H	I	L	Ø A	B				
8	1/4	100	13.7	2.60	72	154	70	F03	36	M5	6	3	0.5
10	3/8	100	17.2	3.35	72	154	70	F03	36	M5	7	3	0.5
15	1/2	100	21.3	2.80	86	169	75	F04	42	M5	10	5	0.7
20	3/4	100	26.9	2.95	93	169	90	F04	42	M5	25	10	0.9
25	1	63	33.7	3.45	105	222	100	F05	50	M6	35	11	1.3
32	1 1/4	63	42.4	5.20	110	222	110	F05	50	M6	46	20	1.9
38	1 1/2	63	48.3	5.15	124	222	125	F05	50	M6	80	26	2.9
49	2	63	60.3	5.65	146	304	150	F07	70	M8	110	30	4.7
65	2 1/2	63	76.1	5.55	170	304	190	F07	70	M8	310	70	9.7
80	3	63	88.9	4.45	176	354	220	F10	102	M10	360	90	14.6
100	4	63	114.3	7.15	207	354	270	F10	102	M10	820	120	25.8

BALL VALVES RK-PROBALL

KH 3T S (NC), 1/4" - 4", PN63/100
safety spring locking device



Ball valves RK-Proball KH 3T all sizes are also available with pneumatical, electrical or hydraulic actuators.

No.	Part	Material	Material
1	body	1.0619	1.4408
2	cap	1.0619	1.4408
3	ball		1.4408
4	seat		KFG
5	stem		1.4401
6	stop pin		1.4301
7	washer		KFG
8	stem packing		KF
9	hex. screw		A2-70
10	hex. nut		A2-70
11	thrust washer		1.4301
12	hex. nut		A2-70
13	lever		1.4301
14	insulation cover		Vinyl
15	plate spring		1.4310
16	locking plate		1.4301
17	antistatic element		1.4401
18	spring locking device		1.4301

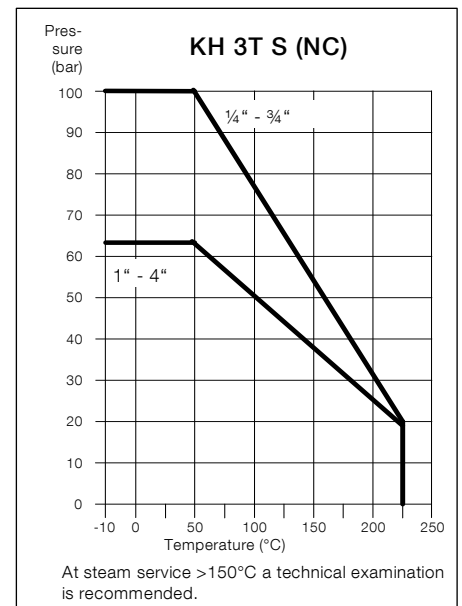
Ball valve with butt weld ends
full bore

face to face acc. to DIN 3202-S13
butt weld ends acc. to EN 12627

Specification:

Three-piece ball valve, butt weld ends acc. to EN 12627, face to face dimensions acc. to DIN 3202-S13, full bore, blow-out-proof stem, body material stainless steel (1.4408) or steel (1.0619), antistatic device, free of non ferrous metals, seat KFG, stem packing KF, disc spring loaded adjustable, top flange DIN EN ISO 5211, approved by PED, certified acc. to GERMAN clean air act VDI 2440, lever with safety spring locking device.

Marking: RK-Proball
Types: KH 3T S (NC)-1.0619
KH 3T S (NC)-1.4408



Ordering example:
KH 3T S (NC), 2", PN 63, 1.4408,
safety spring locking device

Dimensions

DN mm	DN inch	PN	dimensions (mm)				top flange ISO 5211			Kv-value	torque	weight	
			Ø Da	S	H	I	L	Ø A	B	m ³ /h	Nm	kg	
8	1/4	100	13.7	2,60	63	118	70	F03	36	M5	6	3	0.5
10	3/8	100	17.2	3,35	63	118	70	F03	36	M5	7	3	0.5
15	1/2	100	21.3	2,80	67	135	75	F04	42	M5	10	5	0.7
20	3/4	100	26.9	2,95	73	135	90	F04	42	M5	25	10	0.9
25	1	63	33.7	3,45	80	168	100	F05	50	M6	35	11	1.3
32	1 1/4	63	42.4	5,20	87	168	110	F05	50	M6	46	20	1.9
38	1 1/2	63	48.3	5,15	103	205	125	F05	50	M6	80	26	2.9
49	2	63	60.3	5,65	112	218	150	F07	70	M8	110	30	4.7
65	2 1/2	63	76.1	5,55	156	280	190	F07	70	M8	310	70	9.7
80	3	63	88.9	4,45	163	376	220	F10	102	M10	360	90	14.6
100	4	63	114.3	7,15	194	376	270	F10	102	M10	820	120	25.8



Klinger Portugal, Lda.
Via José Régio, 36
Centro Empresarial Vilar do Pinheiro
4485-860 Vila do Conde
T: +351 22 947 0910
E-mail: geral@klinger.pt

Delegação Lisboa
Rua de Cabo Verde, 8
Prior Velho 2685-316
T: +351 21 940 6620
E-mail: lisboa@klinger.pt