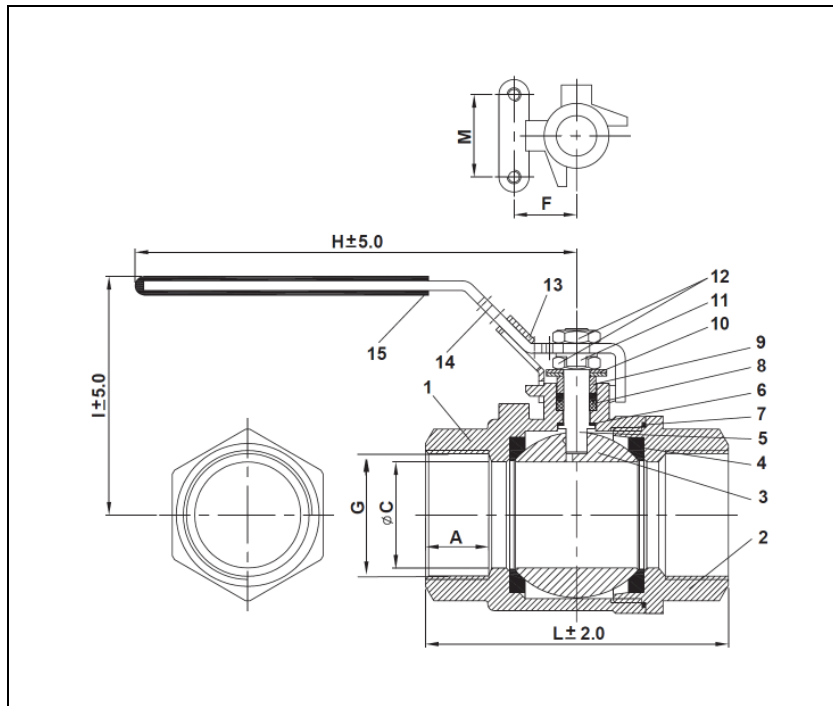


# BALL VALVES RK-PROBALL

KH 2T M (NC), 1/4" - 2", PN63, 2 1/2" - 3", PN40



Ball valves with threaded ends  
acc. to EN 10226-1 / EN ISO 228-1  
full bore  
face to face acc. to DIN 3202-M3

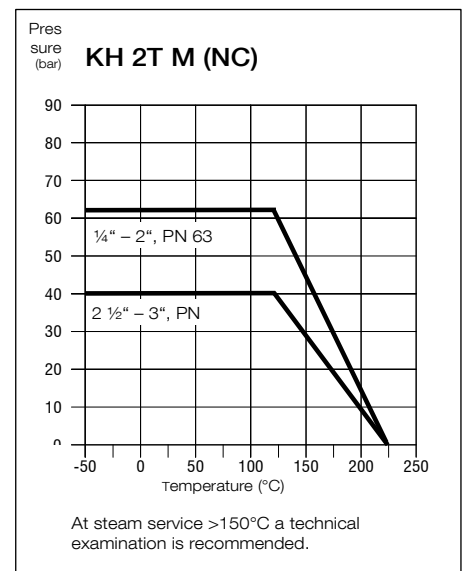
### Specification:

Two-piece ball valve, threaded ends acc. to EN 10226-1 / EN ISO 228-1, face to face dimensions acc. to DIN 3202-M3, full bore, blow-out-proof stem, body material stainless steel (1.4408), free of non ferrous metals, seat KFG, stem packing KF, disc spring loaded adjustable, approved by PED, certified acc. to GERMAN clean air act VDI 2440, safety spring locking device is optional.

Marking: RK-Proball  
Type: KH 2T M (NC)-1.4408

| No. | Part             | Material |
|-----|------------------|----------|
| 1   | body             | 1.4408   |
| 2   | cap              | 1.4408   |
| 3   | ball             | 1.4408   |
| 4   | seat             | KFG      |
| 5   | stem             | 1.4401   |
| 6   | thrust washer    | KF       |
| 7   | body seal        | KF       |
| 8   | stem packing     | KF       |
| 9   | gland ring       | 1.4301   |
| 10  | disc spring      | 1.4310   |
| 11  | nut stopper      | 1.4301   |
| 12  | stem nuts        | 1.4301   |
| 13  | locking device*  | 1.4301   |
| 14  | lever            | 1.4301   |
| 15  | insulation cover | PVC      |

\* special type



### Dimensions

| DN<br>mm | connection<br>G in inch | PN | dimensions (mm) |      |      |      |     |     |     | torque<br>Nm | weight<br>kg |
|----------|-------------------------|----|-----------------|------|------|------|-----|-----|-----|--------------|--------------|
|          |                         |    | A               | C    | F    | M    | H   | I   | L   |              |              |
| 8        | G 1/4"                  | 63 | 12.5            | 11,5 | 12.7 | 28.5 | 115 | 66  | 50  | 4            | 0.3          |
| 10       | G 3/8"                  | 63 | 14              | 12,5 | 12.7 | 28.5 | 115 | 66  | 60  | 4            | 0.3          |
| 15       | G 1/2"                  | 63 | 17.8            | 15   | 12.7 | 28.5 | 115 | 68  | 75  | 6            | 0.4          |
| 20       | G 3/4"                  | 63 | 19.1            | 20   | 22.1 | 35   | 132 | 77  | 80  | 8            | 0.6          |
| 25       | G 1"                    | 63 | 22.6            | 25   | 22.1 | 35   | 162 | 82  | 90  | 11           | 1.0          |
| 32       | G 1 1/4"                | 63 | 24.9            | 32   | 23.6 | 38   | 162 | 87  | 110 | 15           | 1.4          |
| 40       | G 1 1/2"                | 63 | 24.9            | 38   | 23.6 | 38   | 205 | 103 | 120 | 25           | 2.3          |
| 50       | G 2"                    | 63 | 29.2            | 49   | 28.9 | 38.5 | 205 | 111 | 140 | 42           | 3.3          |
| 65       | G 2 1/2"                | 40 | 33.7            | 65   | 35   | 55   | 260 | 152 | 185 | 60           | 7.4          |
| 80       | G 3"                    | 40 | 36.8            | 80   | 37.5 | 72   | 260 | 161 | 205 | 70           | 11.4         |

### Ordering example:

KH 2T M (NC), 2", PN 63, 1.4408,  
safety spring locking device



Klinger Portugal, Lda.  
Via José Régio, 36  
Centro Empresarial Vilar do Pinheiro  
4485-860 Vila do Conde  
T: +351 22 947 0910  
E-mail: geral@klinger.pt

Delegação Lisboa  
Rua de Cabo Verde, 8  
Prior Velho 2685-316  
T: +351 21 940 6620  
E-mail: lisboa@klinger.pt